

🔍 To search page

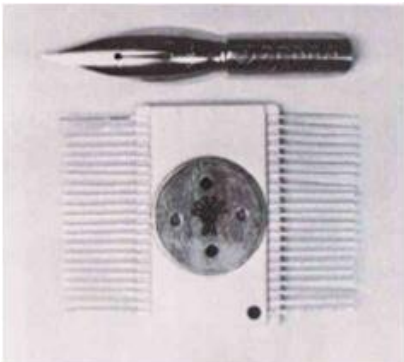
1969

Development of 42-pin FPC packages

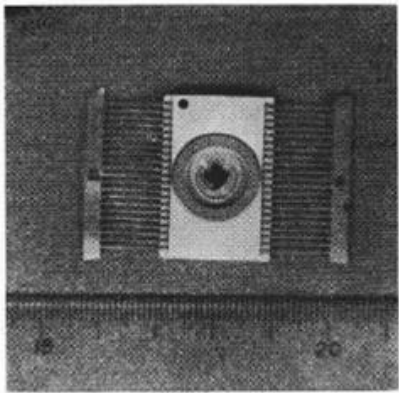
~ Packaging ~

In 1969, the world's first multilayer ceramic package of 42-pin was developed and produced at Musashi Works of Hitachi, and it was applied to MOSLSIs such as HD3201 for desk-top calculators. In addition to application of ceramic packages, new technologies such as CAD design, cell design method, two-layer interconnection technology were adopted in this LSI, and they opened a way to Hitachi's MOSLSI business.

Forming of the package cap adopted a 4-point drawing method, and flatness of the cap and the manufacturing quality of seam weld sealing were improved. Since the soldering irons were used for connection to the PCBs, the length of the leads was designed to be long.



MOS LSI HD3201 for calculator using 42-pin package



MOS LSI after assembly

